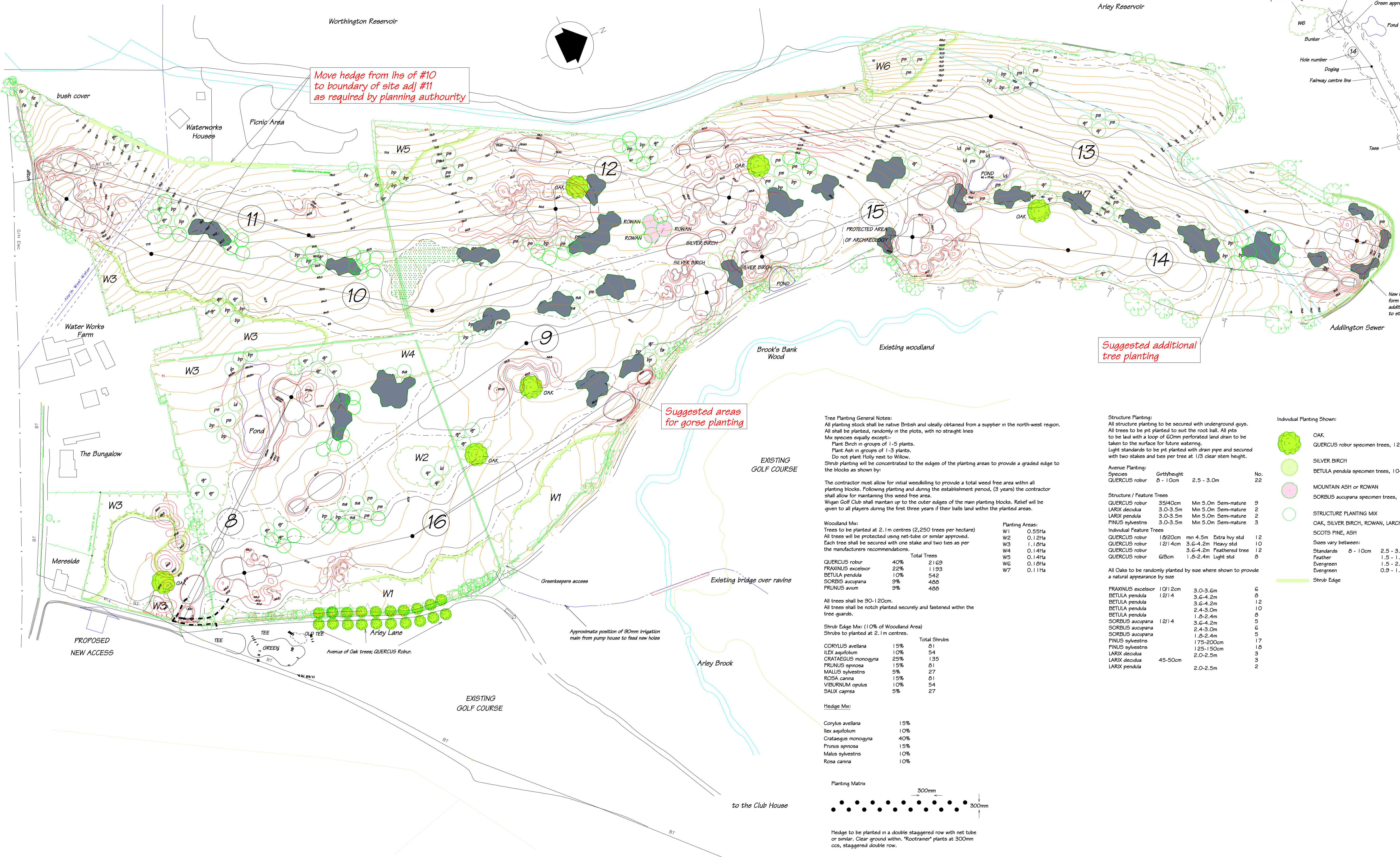
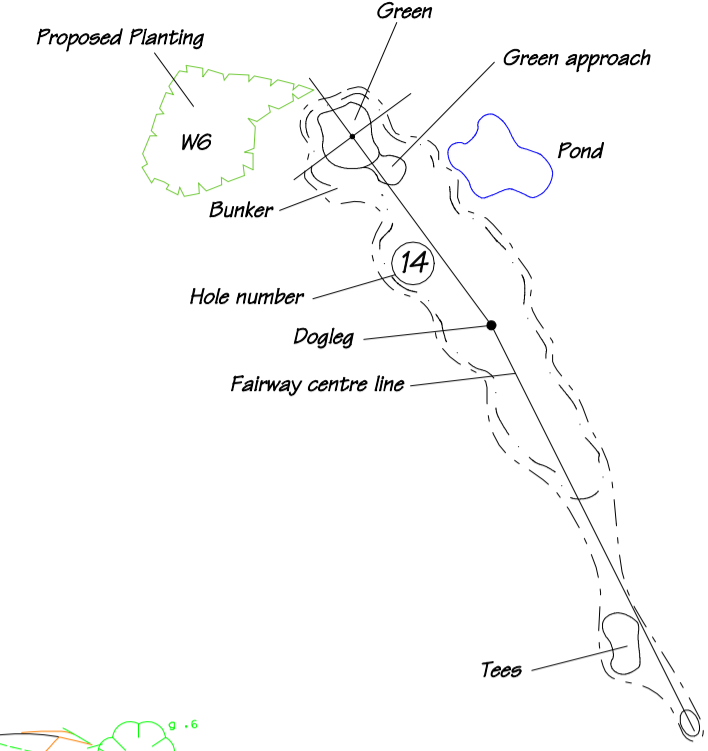


Legend



Move hedge from lhs of #10 to boundary of site adj #11 as required by planning authority

Suggested areas for gorse planting

Suggested additional tree planting

New Hedge Planting to form spiny barrier. Use additional spiny shrubs to strengthen this boundary

Tree Planting General Notes:
 All planting stock shall be native British and ideally obtained from a supplier in the north-west region. All shall be planted, randomly in the plots, with no straight lines. Mix species equally except:-
 Plant Birch in groups of 1-5 plants.
 Plant Ash in groups of 1-3 plants.
 Do not plant Holly next to Willow.
 Shrub planting will be concentrated to the edges of the planting areas to provide a graded edge to the blocks as shown by:

The contractor must allow for mth weedkilling to provide a total weed free area within all planting blocks. Following planting and during the establishment period, (3 years) the contractor shall allow for maintaining this weed free area.
 Wigan Golf Club shall maintain up to the outer edges of the main planting blocks. Relief will be given to all players during the first three years if their balls land within the planted areas.

Woodland Mix:
 Trees to be planted at 2.1m centres (2,250 trees per hectare)
 All trees will be protected using net-tube or similar approved.
 Each tree shall be secured with one stake and two ties as per the manufacturers recommendations.

Species	Total Trees
QUERCUS robur	40%
FRAXINUS excelsior	22%
BETULA pendula	10%
SORBUS aucupana	9%
PRUNUS avium	9%
Total Trees	2163

Planting Areas:

Area	Area
W1	0.55Ha
W2	0.12Ha
W3	1.14Ha
W4	0.14Ha
W5	0.14Ha
W6	0.18Ha
W7	0.11Ha

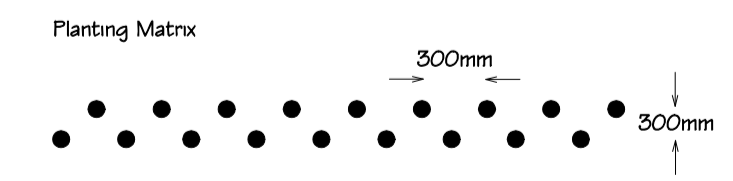
All trees shall be 90-120cm.
 All trees shall be notch planted securely and fastened within the tree guards.

Shrub Edge Mix: (10% of Woodland Area)
 Shrubs to be planted at 2.1m centres.

Species	Total Shrubs
CORYLUS avellana	15%
ILEX aquifolium	10%
CRATAEGUS monogyna	25%
PRUNUS spinosa	15%
MALUS sylvestris	5%
ROSA canina	15%
VIBURNUM opulus	10%
SALIX caprea	5%
Total Shrubs	27

Hedge Mix:

Corylus avellana	15%
Ilex aquifolium	10%
Crataegus monogyna	40%
Prunus spinosa	15%
Malus sylvestris	10%
Rosa canina	10%



Hedge to be planted in a double staggered row with net tube or similar. Clear ground within. "Roottrainer" plants at 300mm ccs, staggered double row.

Structure Planting:
 All structure planting to be secured with underground guys. All trees to be pit planted to suit the root ball. All pits to be laid with a loop of 60mm perforated land drain to be taken to the surface for future watering.
 Light standards to be pit planted with drain pipe and secured with two stakes and ties per tree at 1/3 clear stem height.

Avenue Planting:

Species	Girth/height	No.
QUERCUS robur	Ø - 1.0cm	2.5 - 3.0m

Structure / Feature Trees

Species	Quantity	Min	Max	Notes
QUERCUS robur	35/40cm	5.0m	6.0m	Semi-mature
LARIX decidua	3.0-3.5m	5.0m	6.0m	Semi-mature
LARIX pendula	3.0-3.5m	5.0m	6.0m	Semi-mature
FINUS sylvestris	3.0-3.5m	5.0m	6.0m	Semi-mature

Individual Feature Trees

Species	Quantity	Min	Max	Notes
QUERCUS robur	1Ø/20cm	4.5m	5.5m	Extra hvy std
QUERCUS robur	12/14cm	3.6-4.2m	4.5m	Heavy std
QUERCUS robur	3.6-4.2m	3.6-4.2m	4.5m	Feathered tree
QUERCUS robur	6/8cm	1.8-2.4m	3.0m	Light std

All Oaks to be randomly planted by size where shown to provide a natural appearance by size

Species	Quantity	Min	Max
FRAXINUS excelsior	1Ø/12cm	3.0-3.6m	4.5m
BETULA pendula	12/14	3.6-4.2m	4.5m
BETULA pendula	12/14	3.6-4.2m	4.5m
BETULA pendula	2.4-3.0m	2.4-3.0m	3.6m
BETULA pendula	1.8-2.4m	1.8-2.4m	3.0m
SORBUS aucupana	12/14	3.6-4.2m	4.5m
SORBUS aucupana	2.4-3.0m	2.4-3.0m	3.6m
SORBUS aucupana	1.8-2.4m	1.8-2.4m	3.0m
FINUS sylvestris	175-200cm	1.25-1.50cm	1.75m
FINUS sylvestris	125-150cm	1.25-1.50cm	1.5m
LARIX decidua	45-50cm	2.0-2.5m	3.0m
LARIX pendula	45-50cm	2.0-2.5m	3.0m

- Individual Planting Shown:**
- OAK
 - QUERCUS robur specimen trees, 12-14cm, height 4.0m
 - SILVER BIRCH
 - BETULA pendula specimen trees, 10-12cm, height 3.5m
 - MOUNTAIN ASH or ROWAN
 - SORBUS aucupana specimen trees, 10-12cm, height 3.5m
 - STRUCTURE PLANTING MIX
 - OAK, SILVER BIRCH, ROWAN, LARCH & WEeping LARCH, SCOTS PINE, ASH
 - Sizes vary between:
 - Standards Ø - 10cm 2.5 - 3.0m
 - Feather 1.5 - 1.8m
 - Evergreen 1.5 - 2.0m
 - Evergreen 0.9 - 1.2m
 - Shrub Edge

Notes (2002):
 * Replace any failed Oaks on entrance avenue as I feel this is important.
 Perhaps plant smaller trees to save on cost.
 * Boost all planting blocks of trees, particularly where shown - use selection from original list which can be seen to be doing well.
 * Introduce gorse predominantly along ridge top where shown.
 Although probably not an ecologically desirable species, gorse add great colour and will help to define the playing areas and will strengthen the current planting